



INTERNATIONAL SALES

traveling exhibitions information package

Table of Contents

THE SCIENCE OF GUINNESS WORLD RECORDS	3
BEYOND HUMAN LIMITS	4
WILD WEATHER	5
TRAILBLAZING: WOMEN IN CANADA SINCE 1867	6
GENOME: UNLOCKING LIFE'S CODE	7
ARCTIC VOICES	8
THE SCIENCE OF RIPLEY'S BELIEVE IT OR NOT	9
GAME CHANGERS	10



Be amazed by the strongest, longest, highest, and fastest! Learn the science behind these feats and use this knowledge to develop your skills.

Be amazing as you explore, focus, react and endure!

Be **OFFICIALLY AMAZING™** and break a world record!

The Science of Guinness World Records™ will engage visitors in real science experiences and record-breaking challenges. Visitors will learn that anyone, anywhere can be a record-breaker

while using science to develop their record-breaking skills and abilities.

Visitors will gain an understanding of their body and how it reacts, focuses, and endures. There will be opportunities for visitors to challenge themselves and others to officially break a world record with a formal adjudication of a record attempt.

The Science of Guinness World Records™ is developed in partnership with the Ripley Entertainment.

Themes

- STEAM
- Natural History
- Popular Culture
- Human Performance

Features

- Leaderboard for visitor attempts
- Hands-on attempt arena
- Interactive multimedia theater
- Official adjudication event



Availability

- 2020** | Fall
- 2021** | Winter, Summer, Fall
- 2022** | Winter, Fall



6,000+ sq.ft.



Travels in 4 trucks



Ask Us!

BEYOND HUMAN LIMITS



How do you perceive risk?
Do you seek thrill and excitement?
What makes an extreme sports athlete?
Do you have the personality and motivation?

Beyond Human Limits takes visitors inside the minds and bodies of extreme athletes to explore the psychology, physiology, and physicality of some of the most extreme activities in the world. In this high-energy exhibition visitors experience the thrill of extreme sports in exciting, interactive

exhibits and immersive environments.

Visitors will explore the technology, creativity, and innovation inherent in these sports. They will be introduced to passionate athletes and hear their incredible stories. Beyond Human Limits allows visitors to take in the artistry, and understand the motivation and thoughtfulness behind extreme sports.

Beyond Human Limits is developed in partnership with the Ontario Science Centre.

Themes

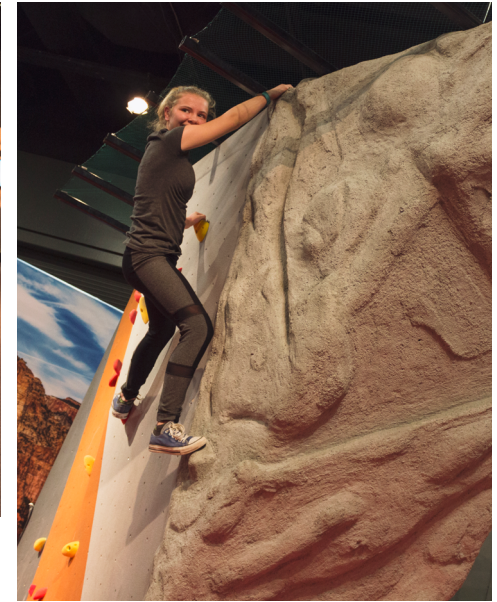
- Science
- Physiology
- Psychology
- Sports
- Human Performance

Features

- 360° Immersion Room
- Climbing Wall
- Parkour Course
- Multimedia Theater
- Multiplayer Challenges

Availability

2020 | Summer
2022 | Fall



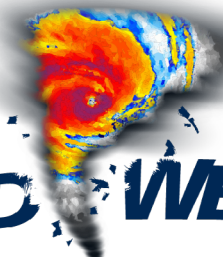
6,000 sq.ft.



Travels in
5 trucks



Ask Us!



WILD WEATHER



Severe weather is a powerful and unpredictable force that causes great damage to communities, infrastructure, and lives.

Wild Weather is a highly interactive and entertaining exhibition that is designed to immerse and engage visitors in the science of severe weather.

Visitors are given unique opportunities to experience severe weather: they will experience a research flight through a hurricane, witness the destruction of tornadoes, follow turbulent cloud formations and lightning

strikes, become citizen scientists in the midst of a raging winter storm, and meet a researcher studying the force of wind in the lab.

Through the exhibition's unique experiences, visitors will discover how emerging technologies and recent scientific discoveries are improving our ability to forecast severe weather and prepare for future climate changes.

Wild Weather is developed in partnership with the Ontario Science Centre.

Themes

- Climate Change
- Meteorology
- Climatology
- Science Technology

Features

- Fly through a hurricane
- Witness the path of a tornado
- Meet extreme weather researchers
- Dance Up a Storm!

Availability

2021 | Winter
2022 | Winter, Summer, Fall



6,000 sq.ft.



Travels in
4 trucks



Ask Us!

WOMEN
IN CANADA SINCE 1867

TRAILBLAZING
INITIATRICES

FEMMES
DU CANADA DEPUIS 1867



What has it meant to be a woman in Canada throughout its 150-year history?

This nationally travelling exhibit explores how women have transformed Canadian politics, work, and everyday life. Trailblazing highlights the experiences of women - mothers, sisters, daughters, partners, and friends - from all walks of Canadian life. Each thematic area includes historic and contemporary narratives, multi-media presentations, artifacts, and in some cases, hands-on interactives. Learn about the challenges faced

by women both historically and today, and discover achievements from across the country.

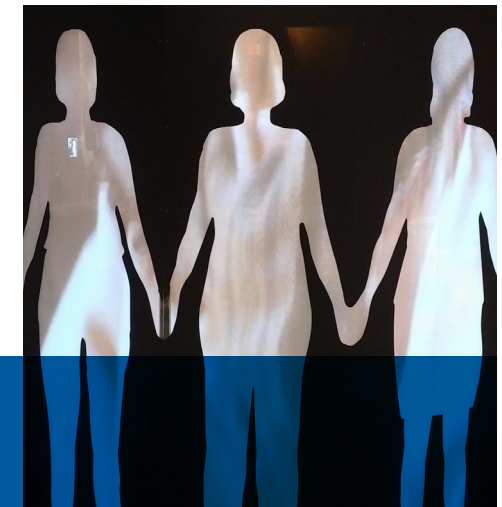
Highlighted throughout the exhibit are Canadian women who have been "trailblazers" in bringing about social and political change. Come learn about the accomplishments of hundreds of remarkable women. From Hide Hyodo Shimizu (a teacher who organized a school system in British Columbia's Japanese internment camps during the Second World War) to Shelia Watt-Cloutier (Nobel Peace Prize nominee in 2007), their stories will inspire.

The Trailblazing: Women in Canada since 1867 exhibit was created and produced by the Waterloo Region Museum and was funded by the Region of Waterloo. The exhibit was also funded in part by the Government of Canada through the Department of Canadian Heritage / Museums Assistance Program. Tour managed by Science North.

Themes

- History
- Popular Culture
- Social Justice
- Women's Rights

Availability
2022 | Fall



1,500 sq.ft.
3,000 sq.ft. or
5,000 sq.ft.



Travels in
1 truck



Ask Us!

GENOME UNLOCKING II LIFE'S CODE



Do you have your mother's dimples? Or your father's hairline? What is it about us that makes us, us? And how much of it actually sets us apart from other human beings and from every other living thing on Earth? Genome: Unlocking Life's Code begins to unravel the mystery behind the complete set of instructions for every living thing on Earth to grow and function.

It took nearly a decade, three billion dollars, and THOUSANDS of scientists to sequence the human genome in 2003. And thanks to the pioneering work of the

Human Genome Project, we are able to know so much more about ourselves, and our world.

In this exhibition, visitors discover how our ability to identify thousands of genes that contribute to disease has helped open the way to more personalized healthcare. See visitors interact with the legal and ethical issues surrounding cutting-edge genomic research and its implications on society. Finally, visitors will see themselves with new context: as an individual, as a member of a family, and as part of the diversity of life on Earth.

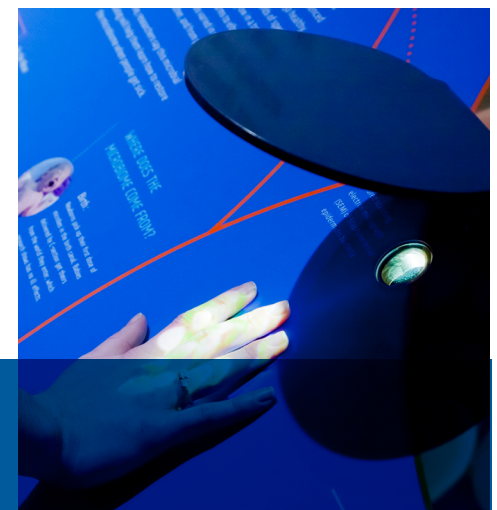
Genome: Unlocking Life's Code was developed and produced by the Smithsonian's National Museum of Natural History and the National Institutes of Health National Human Genome Research Institute, a part of the U.S. Department of Health and Human Services.

Themes

- Biology
- Natural History
- Ethics / Legal
- Genomic Science

Availability

2020 | Summer
2021 | Winter, Summer, Fall



3,000 sq.ft.



Travels in
1 truck



Ask Us!



The Arctic is more than just snow: it is land, water, and ice and home to people and wildlife. It is also the front line for our changing climate.

In this exhibition, visitors will explore the impact of the changing climate in the Arctic through many lenses, including the land, sea, and ice. They will connect with the remarkable animals that live in the Arctic, the resilient people that inhabit this region, and the dedicated scientists who are helping to reveal what makes this place so unique.

Arctic Voices takes visitors into the fascinating and changing world of the Arctic, through interactive and object-based exhibits and multimedia experiences. Visitors explore through the sights, sounds, and voices of this beautiful and changing place.

The Arctic, despite its seemingly isolated location, is connected to all of us.

Co-produced with the Canadian Museum of Nature.

Themes

- Climate Change
- Natural History
- Environmental Science
- Science Technology

Features

- Crawl beneath the ice
- Whale Theatre
- Explore a bear's den
- Simulate throat singing

Availability

- 2020** | Fall
2021 | Winter, Summer, Fall
2022 | Winter, Summer



3,000-
6,000 sq.ft.



Travels in
2.5 trucks



Ask Us!



What's more amazing than Robert Ripley's legendary compendium of oddities, anomalies, and fantastic feats? The science that underlies them.

The Science of Ripley's Believe It or Not!® is a highly interactive traveling exhibition and an adventure through the remarkable realms of scientific discoveries and real artifacts.

Visitors will learn about the world's most bizarre animals, the science behind phenomena in our natural world, how our brain senses perceptions and illusions, and more!

Through experiments, challenges, touchable specimens, computer interactives and multimedia experiences, visitors of all ages will delve into these astounding wonders. They will follow their natural interest and curiosity in the unusual and remarkable as they explore the real science behind the unbelievable.

Developed in partnership with Ripley Entertainment®.

Themes

- Science
- Natural History
- Popular Culture
- Unbelievable Objects
- History

Features

- The largest snake that ever lived
- See from the eyes of the world's tallest man
- Hear from Robert Ripley himself and discover what drove his curiosity



No Availability



6,000+ sq.ft.



Travels in
6 trucks



Ask Us!

GAME CHANGERS



With technological advancements, such as motion sensing and audio developments, our video gaming experience has evolved significantly from the first PONG to the photo-realistic, immersive games of today. Game Changers looks at what shapes the player's experience and explores how innovations have transformed the way we interact with computer technology.

This highly interactive exhibition is a sensory experience that engages visitors in multiple ways. Through carefully chosen video games and systems, and unique interactive

platforms, visitors get to "live" the video game evolution.

This exhibition highlights over 140 iconic games, 16 of which are playable, that have had a significant impact on game design in popular culture and help demonstrate how every evolution has helped transform the overall experience – from the soundtrack to the storyline.

Developed by the Canadian Science and Technology Museum. Tour managed by Science North.

Themes

- Science
- Popular Culture
- History
- Technology
- Innovation

Features

- Over 140 iconic games that transformed the gaming scene
- Original concept art, storyboards, and level designs
- Iconic video game music and sounds

Availability

2020 | Fall

2021 | Winter, Fall

2022 | Winter, Summer, Fall



3,000+ sq.ft.



Travels in
1 truck




Ask Us!

LET'S TALK!

TROY RAINVILLE

Senior Manager, International Sales

 1.705.522.3701 x308

 rainville@sciencenorth.ca

 sciencenorthinternationalsales.ca